



## Goliath for NetScaler v4.0 Prerequisites Guide

**If your NetScaler is processing over 1,000 transactions/sec refer to the enterprise architecture prerequisite and diagram.**

## I. System Requirements

**Note:** Goliath for NetScaler is packaged as a virtual appliance, and is deployed from an OVA. There is no need to build a VM for this process.

---

**Goliath for NetScaler Appliance**  
**1 VM Required**

**Hypervisor:** VMware ESX/ESXi 4.0-6.0, Citrix XenServer 5.6-6.5, Microsoft Hyper-V 2012 R2 - 2016  
**Network:** Static IP Address  
**vCPU:** 4  
**Memory:** Minimum of 4 GB RAM  
**Disk:** 60 GB of Disk Space  
**Database:** MySQL DB included

- Actual database requirement a function of data retention period

---

**Enterprise Architecture Goliath for NetScaler**  
**Multiple VM's required**

**Enterprise architecture requires at least 3 VM's: One VM for the Goliath IT for Analytics NetScaler appliance, AppFlow Data Collector(s), and the database. Each of the VM's have the following requirements.**

**Hypervisor:** VMware ESX/ESXi 4.0-6.0, Citrix XenServer 5.6-6.5, Microsoft Hyper-V 2012 R2 - 2016  
**Network:** Static IP Address  
**vCPU:** 4  
**Memory:** Minimum of 4 GB RAM  
**GFN Appliance VM Disk:** 10 GB  
**AppFlow Collector VM Disk:** 10 GB  
**Database VM Disk:** 250-500 GB estimated

- Actual database requirement a function of data retention period

---

**NetScaler**  
**Load Balancing & Web Traffic**

**Platform:** All NetScaler versions supported (VPX, SDX, & MPX)  
**License Version:** Standard, Enterprise & Platinum

**Firmware:** 9.3 build 61.2 and later  
10.0 build 74.0 and later  
10.1 build 112.15 and later  
10.5 build 54.9 and later  
11.0 all builds

**Note:** NetScaler Firmware 10.5 minimum required for XenApp & XenDesktop performance.

NetScaler administrator credentials required to access the configuration interface.

---

---

**NetScaler**  
*XenApp & XenDesktop Sessions*

**NetScaler:** 10.5.54.9 and newer required

**License Version:** Platinum

**Supported OS and Citrix Receiver details for NetScaler XA &XD reports:**

Windows 7:

3.4 Enterprise Edition

4.0 Standard Edition

Windows 8:

3.4 Enterprise Edition

4.0 Standard Edition

Mac:

11.8, build 238301 and above

Windows 8/DR:

Win 8/RT, version 1.4

**XenApp Release:** XenApp 6.5 build 6682 with HRP01

**XenDesktop Release:** XenDesktop 5.6 build 56060

XenDesktop 7.0 build 3018

---

**NetScaler**  
*Infrastructure Monitoring*

**NetScaler:** 10.5 and newer required

**Platform:** All NetScaler versions supported (VPX, SDX, & MPX)

**License Version:** Standard, Enterprise & Platinum

**Credentials:** NetScaler Service account with Read-Only permissions required for monitoring.

---

**Firewall**

**Goliath for NetScaler Web Console:** TCP port 80

**AppFlow:** UDP port 4739

**NitroAPI:** HTTP(S) 80/443

**Allow access inbound/outbound on TCP 443 to the Appliance:**

<http://s3.amazonaws.com>

<https://license.goliathtechnologies.com>

**Note:** AppFlow traffic is sent by the NetScaler via UDP. This traffic must be able to reach the Goliath for NetScaler VM. If there is a firewall or any network routing hardware that would prevent UDP traffic, then an exception must be made.

---

## II. Before You Begin:

In order to complete the implementation of the Goliath for NetScaler (GFN) virtual appliance, please ensure you have the following items available and prepared:

1. AppFlow enabled on the NetScaler.
2. Goliath for NetScaler virtual machine's IP address should be added as an AppFlow collector.
3. NetScaler credentials available

## III. Best Practices for Configuring AppFlow

Configuring AppFlow will require some analysis by the administrator. AppFlow messages are 'receipts' of network transactions. An AppFlow message will contain information about a connection from a user's machine to a server, the URL the user is accessing, the result code, etc.

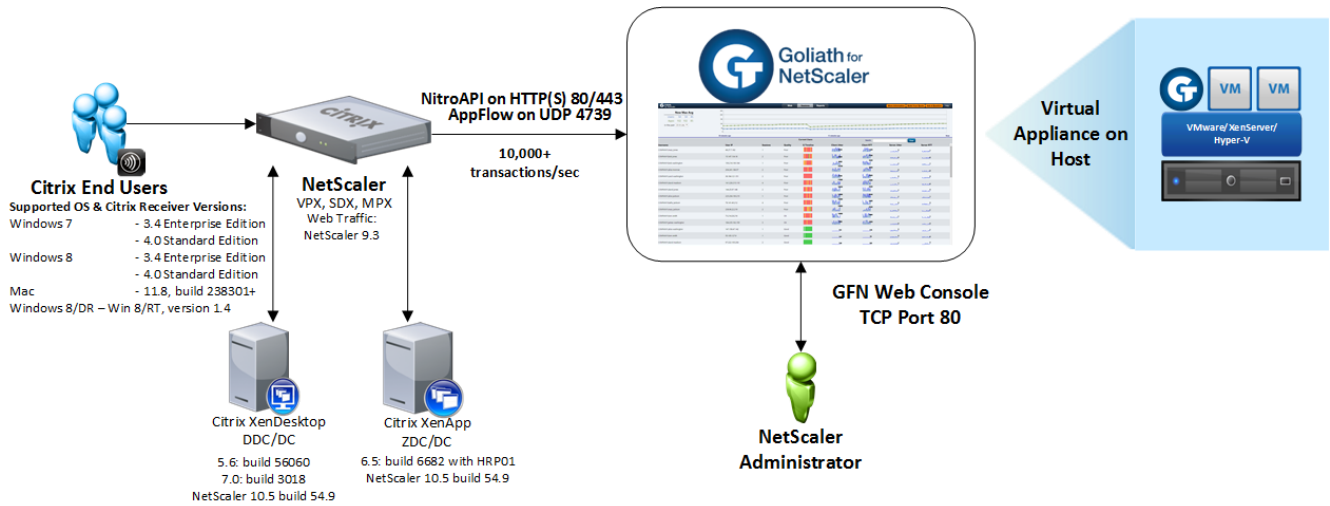
In a large environment with many connections happening each second, you do not want to have AppFlow messages for each one. This would result in too much network traffic (AppFlow messages are themselves network packets that add to the overall flow of data). Instead, the user should create AppFlow policies that only send AppFlow messages for connections that the user is interested in tracking. Often, these are messages related to certain VIPs or defined Virtual Servers.

The NetScaler configuration program offers a rich variety of ways to define AppFlow policies. Goliath Technologies can work with the user to help determine the most effective way to capture the relevant information the user is interested in.

**Further information on how to configure an AppFlow Policy is also available in the Goliath for NetScaler Installation Guide.**

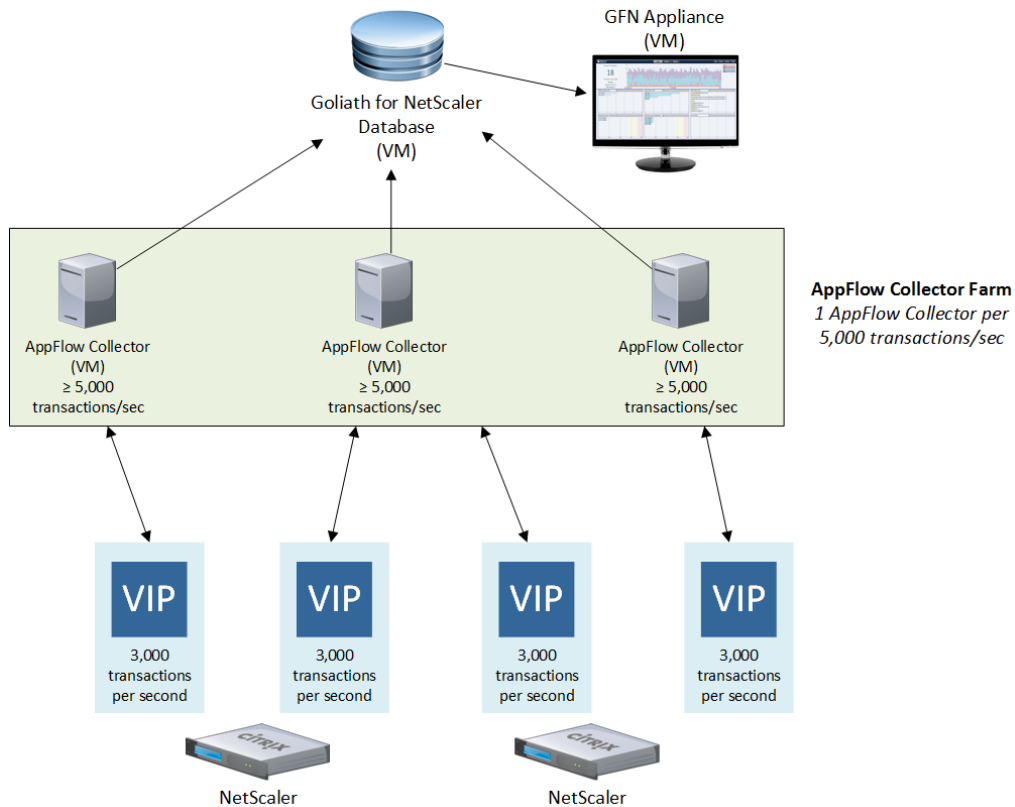
## IV. Deployment Architecture Diagrams

### Standard Architecture Deployment:



### Enterprise Architecture Deployment (Over 1,000 transactions per second):

#### Goliath for NetScaler Enterprise Architecture For volumes > 1,000 transactions per second



## Legal Notices

Goliath for NetScaler v4.0 Prerequisites Guide

Copyright © 2016 Goliath Technologies Inc. All rights reserved. [www.goliathtechnologies.com](http://www.goliathtechnologies.com)

Goliath Technologies believes the information in this publication is accurate as of its publication date. The information is subject to change without notice.

THE INFORMATION IN THIS PUBLICATION IS PROVIDED “AS IS.” GOLIATH TECHNOLOGIES MAKES NO REPRESENTATIONS OR WARRANTIES OF ANY KIND WITH RESPECT TO THE INFORMATION IN THIS PUBLICATION, AND SPECIFICALLY DISCLAIMS IMPLIED WARRANTIES OF MERCHANTABILITY OR FITNESS FOR A PARTICULAR PURPOSE.

Use, copying, and distribution of any Goliath Technologies software described in this publication requires an applicable software license.

Linux is a registered trademark of Linus Torvalds.

Windows is a registered trademark of Microsoft Corporation.

VMware, ESX, ESXi, vCenter, and vSphere are either trademarks or registered trademarks of VMware Corporation.

Citrix, XenApp, XenDesktop, XenServer, and XenCenter are either trademarks or registered trademarks of Citrix Systems Inc.

All other trademarks and copyrights referred to are the property of their respective owners.

## Support, Sales, Renewals and Licensing

- For information on new sales, licensing and support renewals you can email [sales@goliathtechnologies.com](mailto:sales@goliathtechnologies.com)
- For additional information about Goliath Technologies products and services, go to <http://www.goliathtechnologies.com>
- For customers and partners with an active support agreement, you can use the support web board or email [support@goliathtechnologies.com](mailto:support@goliathtechnologies.com) for information about software patches, technical documentation, and support programs.

**Note:** A valid support agreement is necessary to receive new release and software updates.